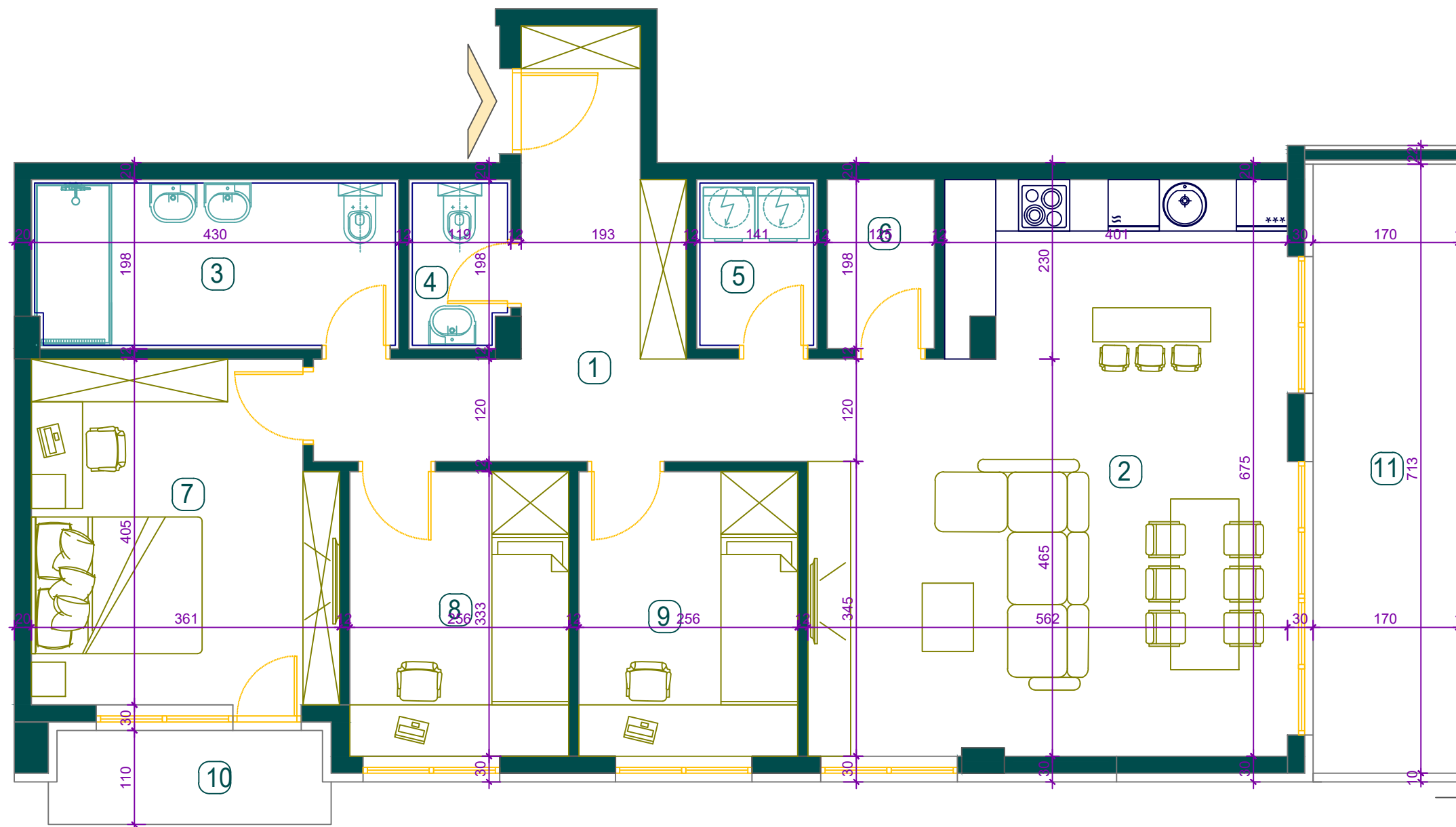


# POVUCENI SPRAT

## STAN br.35

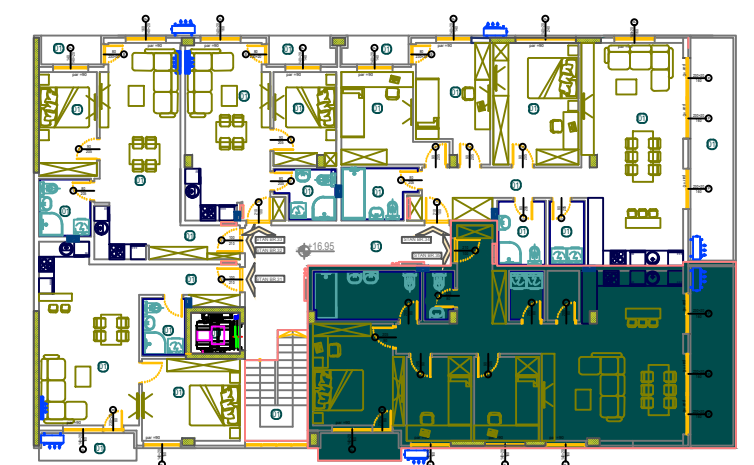


BROJ	NAZIV PROSTORIJE	P (m <sup>2</sup> )
1	HODNIK	13.52
2	DNEVNA SOBA + KUHINJA+TRPEZARIJA	34.34
3	KUPATILO	8.48
4	WC	2.29
5	VESERAJ	2.79
6	OSTAVA	2.48
7	SOBA	14.06
8	SOBA	8.54
9	SOBA	8.54
10	TERASA	3.52
11	TERASA	13.01
		111.5700

UKUPNA POVRŠINA STANA

# 111.57 m<sup>2</sup>

POZICIJA STANA U ZGRADI



## LAMELA III