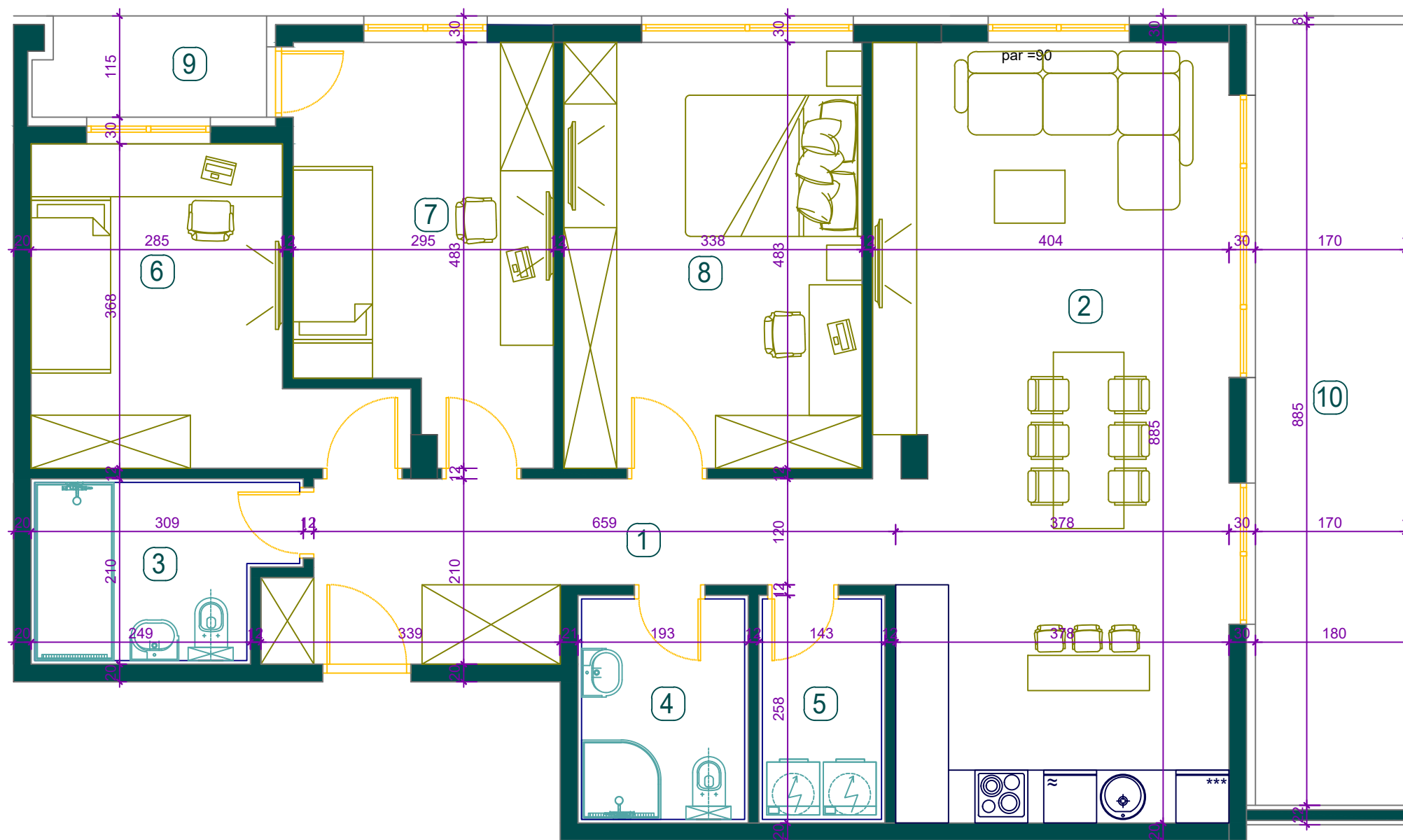


POVUCENI SPRAT

STAN br.34

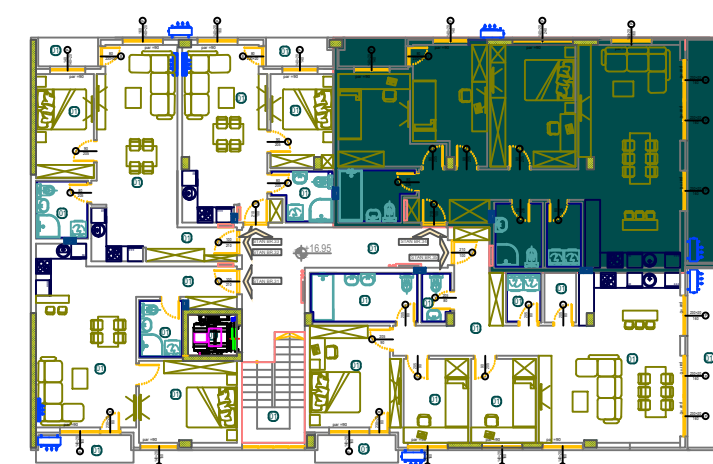


BROJ	NAZIV PROSTORIJE	P (m ²)
1	HODNIK	10.71
2	DNEVNA SOBA + KUHINJA+TRPEZARIJA	34.90
3	KUPATILO	5.82
4	KUPATILO	4.98
5	VESERAJ	3.69
6	SOBA	11.79
7	SOBA	12.69
8	SOBA	16.32
9	TERASA	2.94
10	TERASA	16.11
		119.9500

UKUPNA POVRŠINA STANA

119.95 m²

POZICIJA STANA U ZGRADI



LAMELA III