

III SPRAT

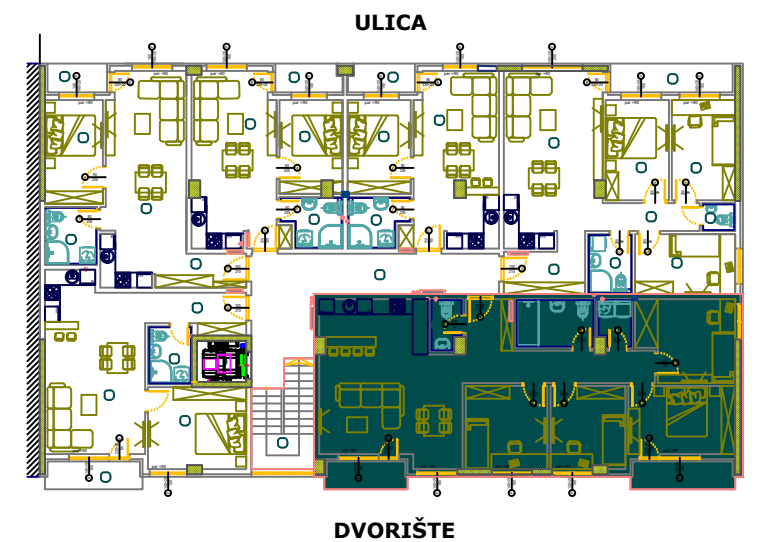
STAN **br.24**

BROJ	NAZIV PROSTORIJE	P (m <sup>2</sup> )
1	HODNIK	13.50
2	DNEVNA SOBA + KUHINJA+TRPEZARIJA	32.95
3	KUPATILO	6.04
4	WC	2.44
5	VESERNICA	2.52
6	SOBA	10.73
7	SOBA	9.71
8	SOBA	11.45
9	SOBA	11.96
10	TERASA	3.52
11	TERASA	4.46
		109.2800

UKUPNA POVRŠINA STANA

**109.28 m<sup>2</sup>**

POZICIJA STANA U ZGRADI



LAMELA III