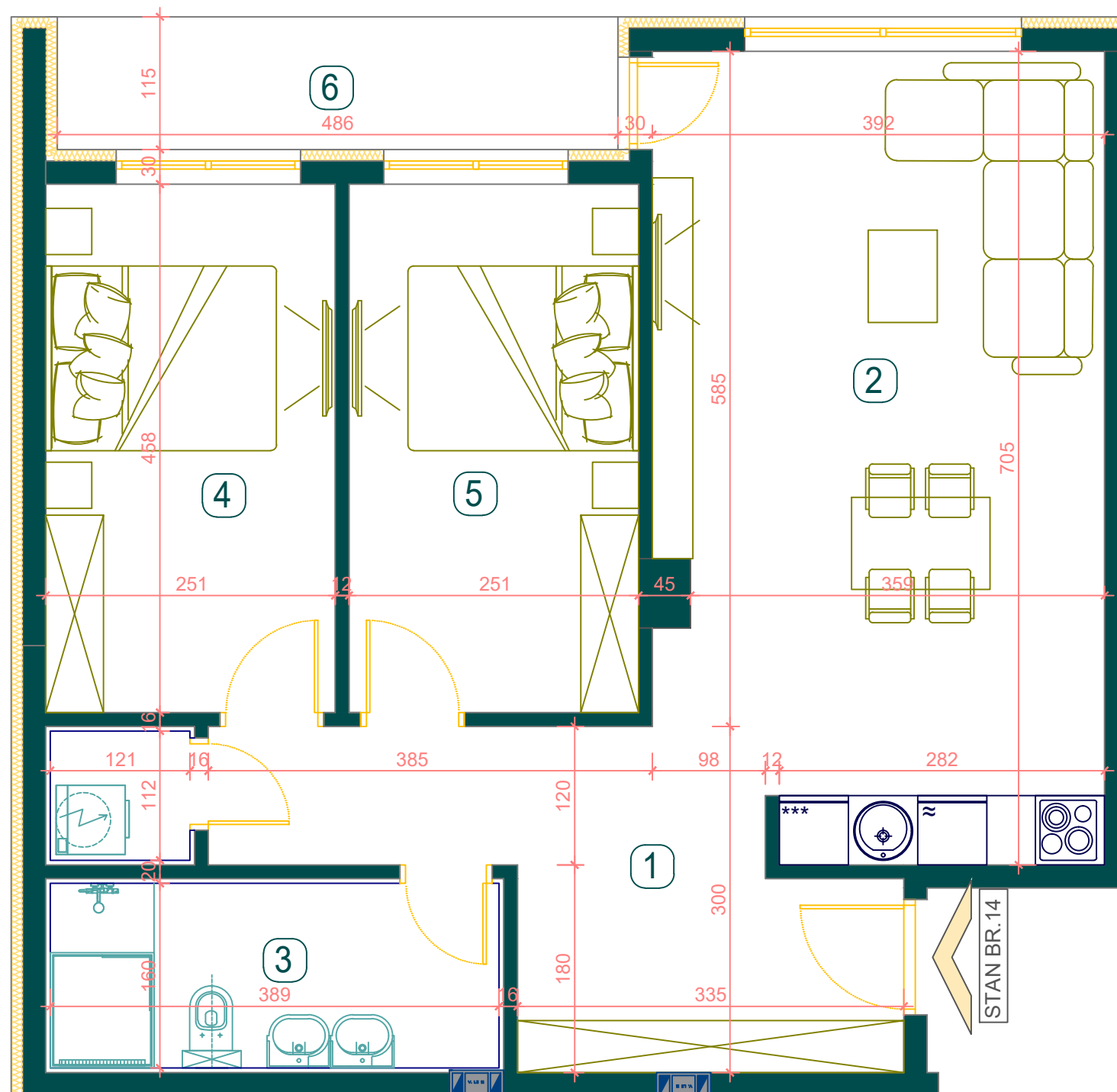


**BMT LUX**  
INVEST



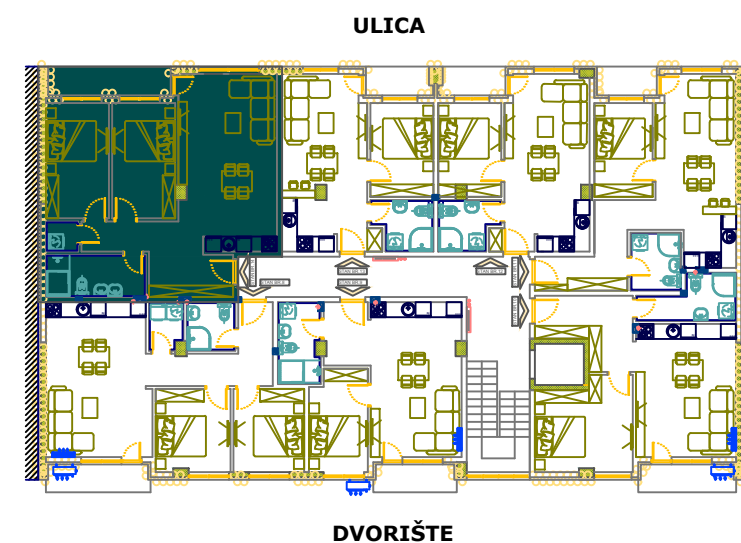
## ČETVRTI SPRAT STAN **br.35**

BROJ	NAZIV PROSTORIJE	P (m <sup>2</sup> )
1	HODNIK	11.09
2	DNEVNA SOBA + KUHNJA+TRPEZARIJA	26.78
3	KUPATILO	6.67
4	SOBA 1	11.50
5	SOBA 2	11.50
6	TERASA	5.59
		73.1300

UKUPNA POVRŠINA STANA

**73.13 m<sup>2</sup>**

POZICIJA STANA U ZGRADI



**LAMELA II**