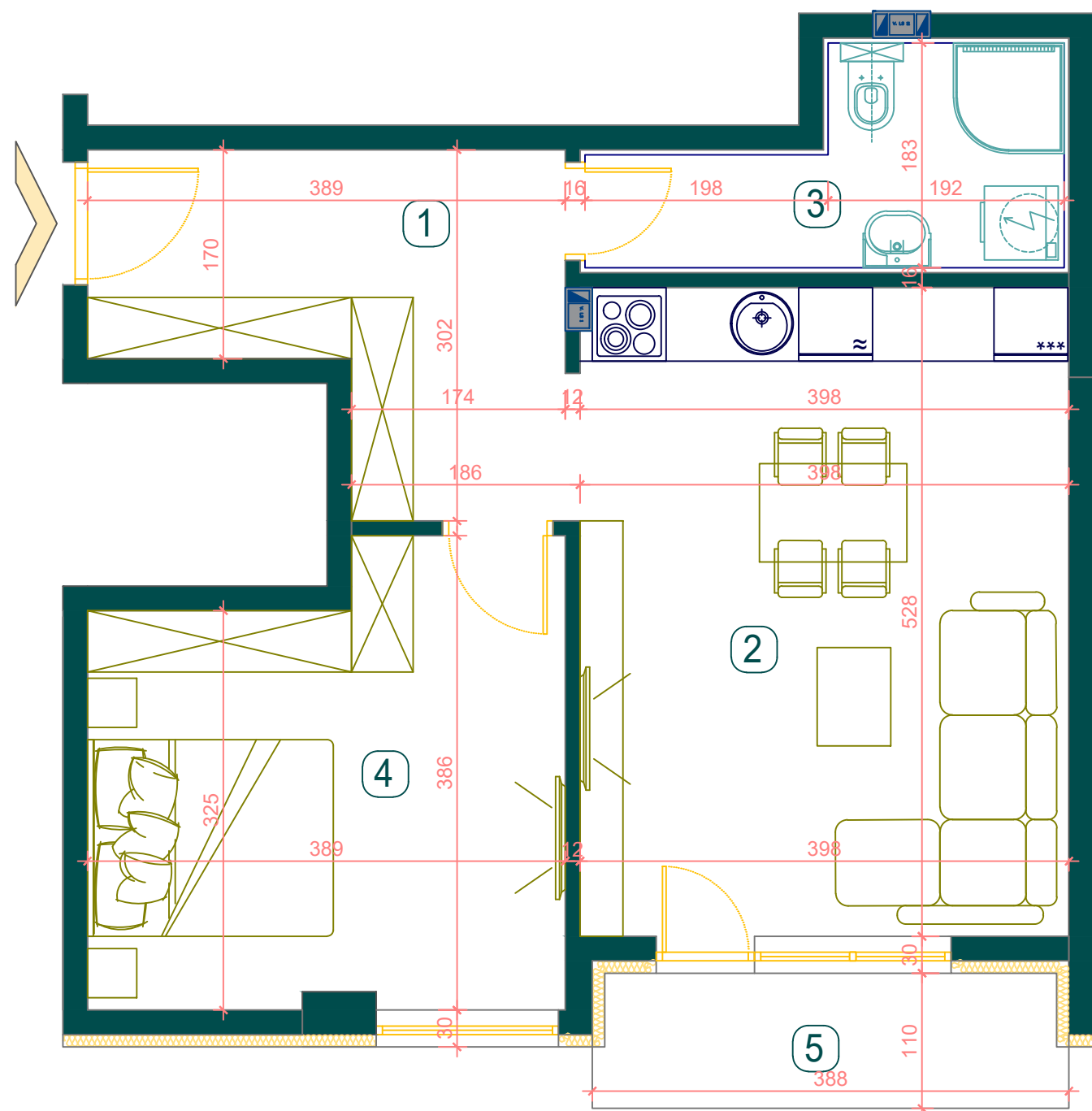


**BMT LUX**  
INVEST



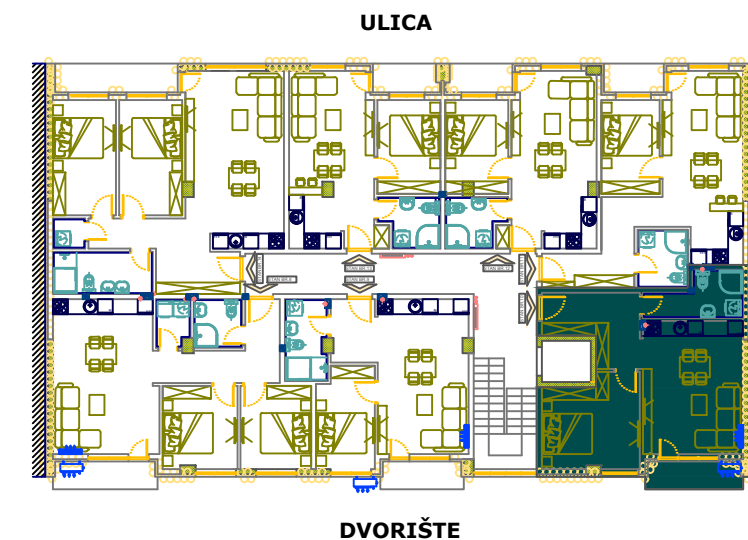
## TREĆI SPRAT STAN **br.24**

BROJ	NAZIV PROSTORIJE	P (m <sup>2</sup> )
1	HODNIK	9.05
2	DNEVNA SOBA + KUHINJA+TRPEZARIJA	20.93
3	KUPATILO	5.80
4	SOBA	13.61
5	TERASA	4.15
		53.5400

UKUPNA POVRŠINA STANA

**53.54 m<sup>2</sup>**

POZICIJA STANA U ZGRADI



**LAMELA II**