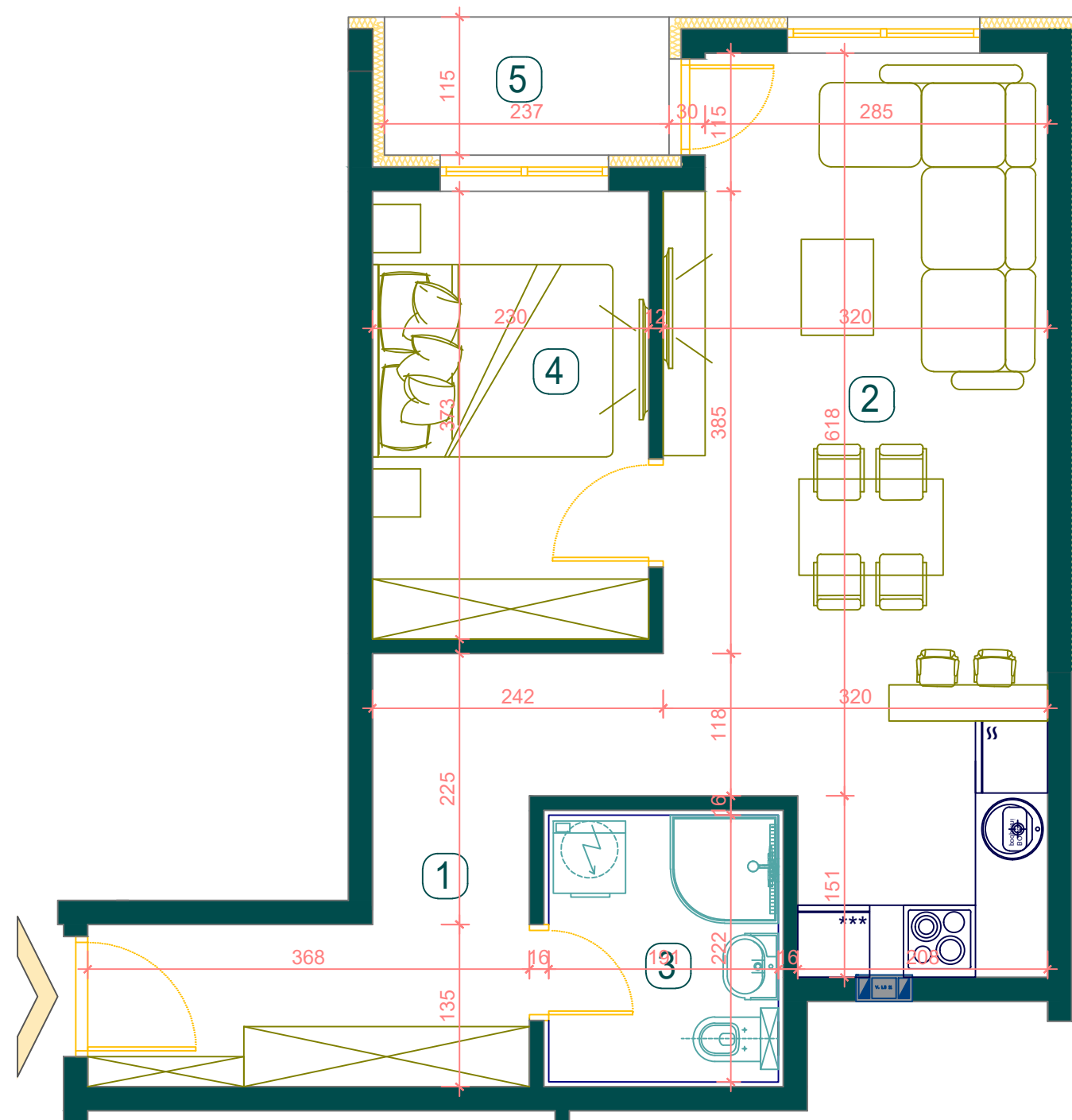


BMT LUX
INVEST



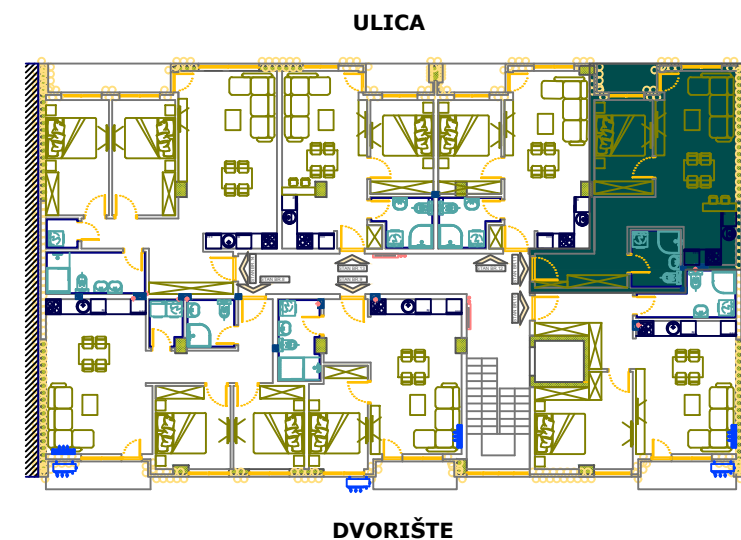
PRVI SPRAT STAN **br.11**

| BROJ | NAZIV PROSTORIJE | P (m ²) |
|------|------------------------------------|---------------------|
| 1 | HODNIK | 9.23 |
| 2 | DNEVNA SOBA + KUHNJA+TRPEZARIJA | 22.51 |
| 3 | KUPATILO | 4.58 |
| 4 | SOBA | 8.57 |
| 5 | TERASA | 2.73 |
| | | 47.6200 |

UKUPNA POVRŠINA STANA

47.62 m²

POZICIJA STANA U ZGRADI



LAMELA II