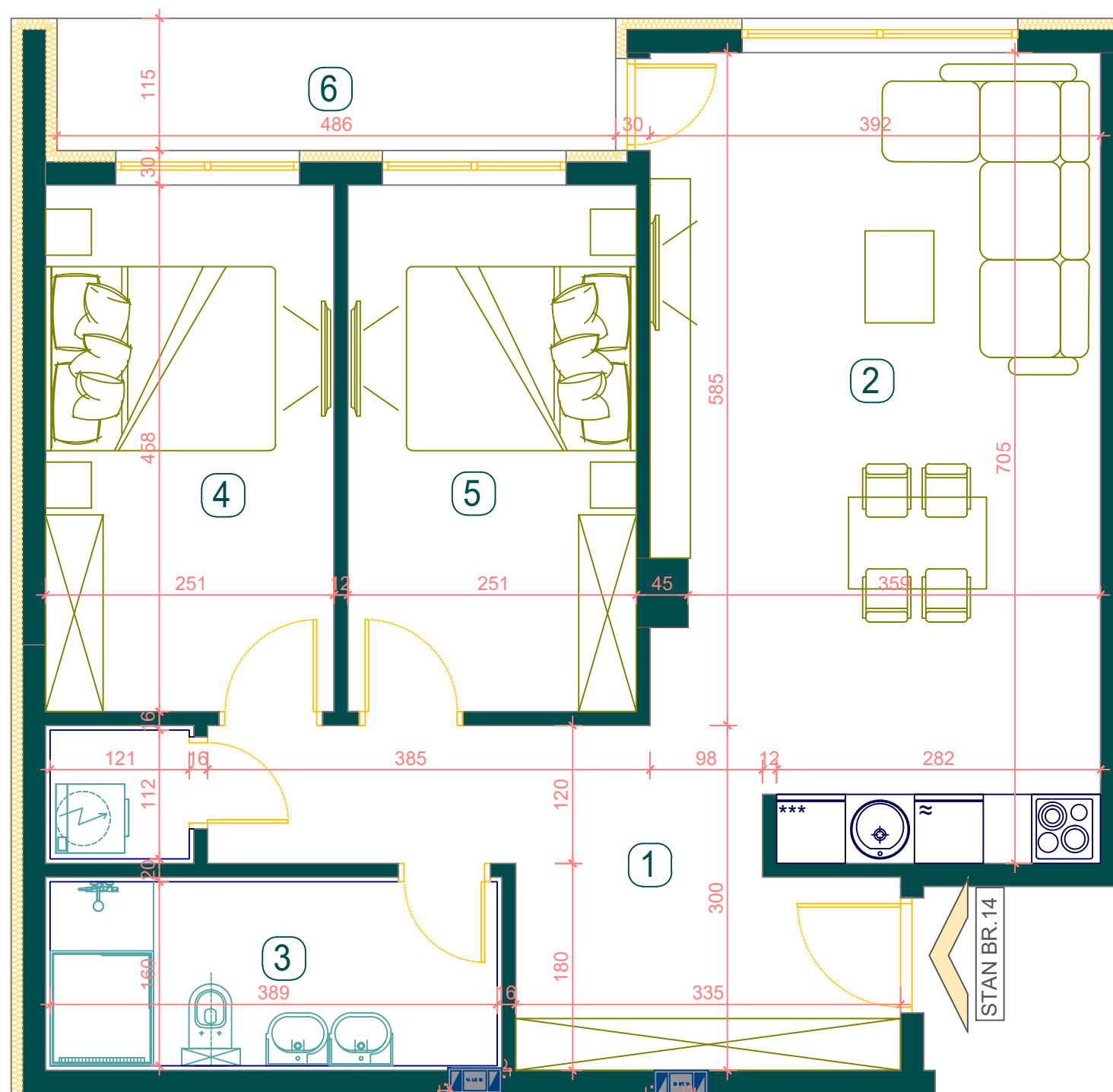


BMT LUX
INVEST



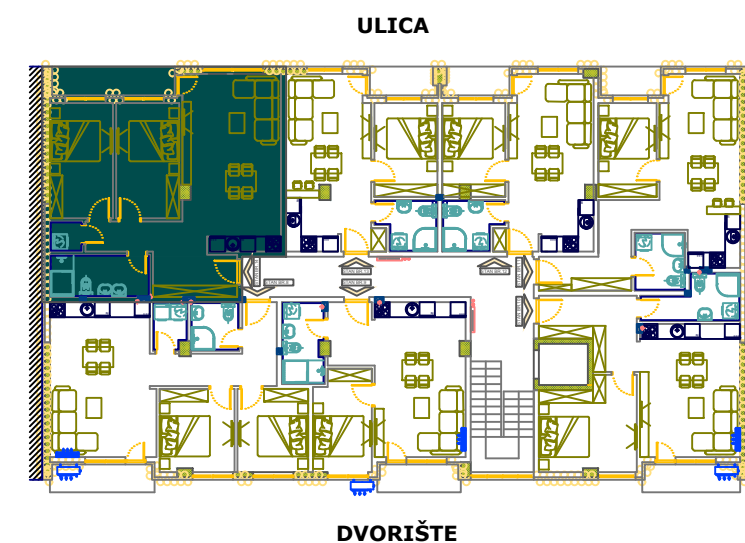
VISOKO PRIZEMLJE STAN **br.7**

BROJ	NAZIV PROSTORIJE	P (m ²)
1	HODNIK	11.09
2	DNEVNA SOBA + KUHNJA+TRPEZARIJA	26.78
3	KUPATILO	6.67
4	SOBA 1	11.50
5	SOBA 2	11.50
6	TERASA	5.59
		73.1300

UKUPNA POVRŠINA STANA

73.13 m²

POZICIJA STANA U ZGRADI



LAMELA II