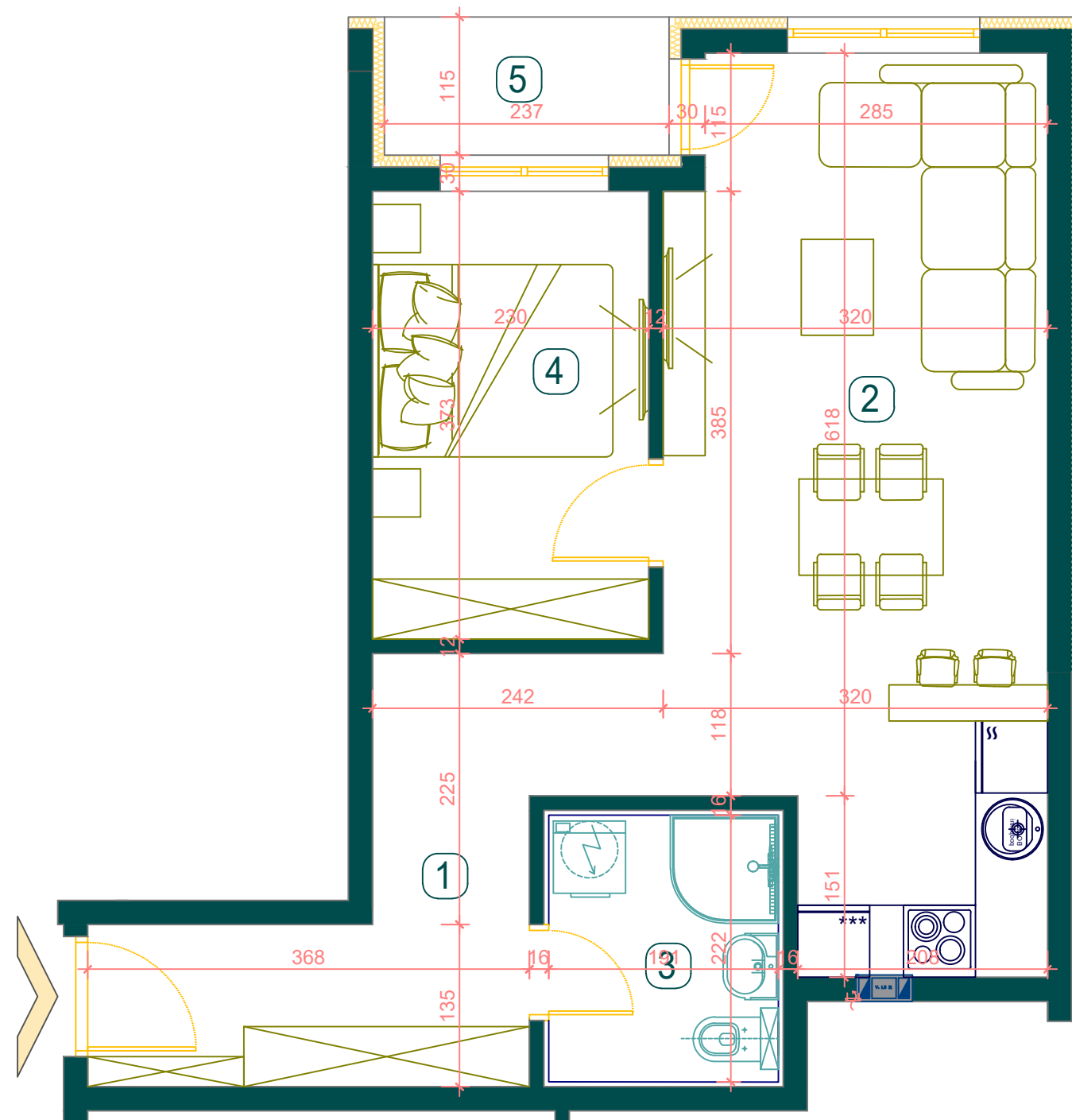


BMT LUX
INVEST



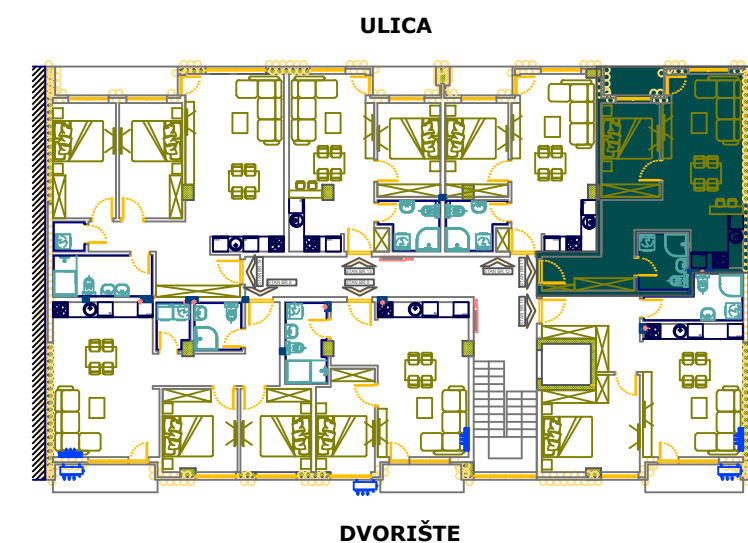
VISOKO PRIZEMLJE STAN **br.4**

BROJ	NAZIV PROSTORIJE	P (m ²)
1	HODNIK	9.23
2	DNEVNA SOBA + KUHNJA+TRPEZARIJA	22.51
3	KUPATILO	4.58
4	SOBA	8.57
5	TERASA	2.73
		47.6200

UKUPNA POVRŠINA STANA

47.62 m²

POZICIJA STANA U ZGRADI



LAMELA II