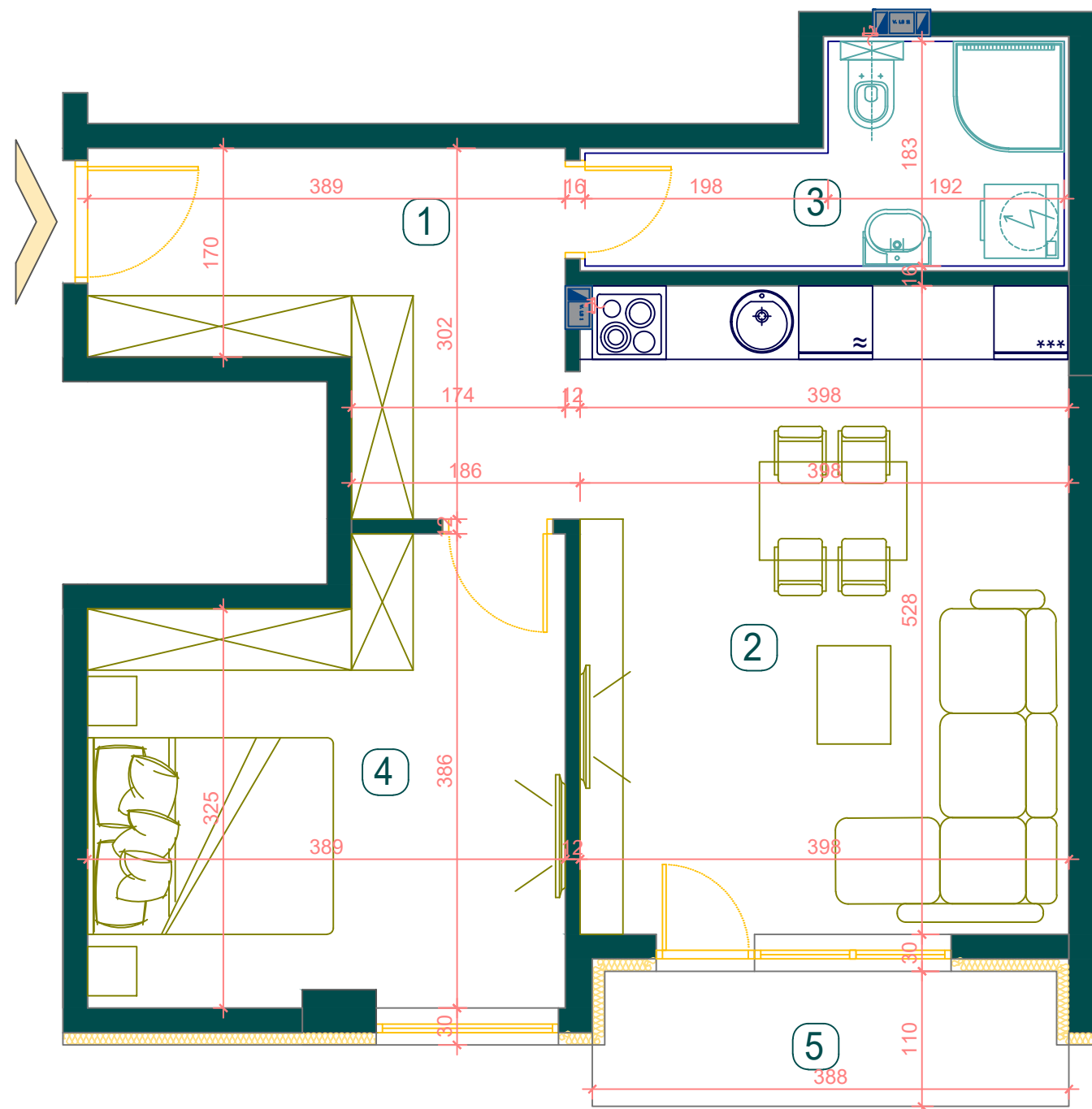


BMT LUX
INVEST



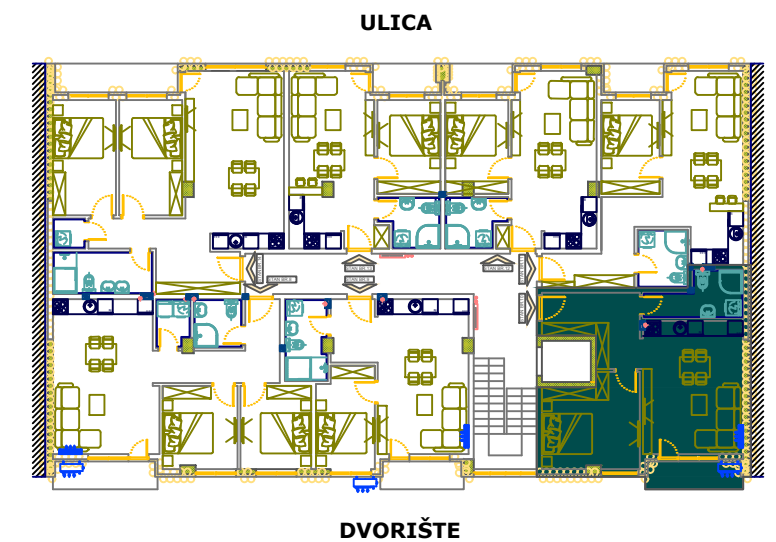
VISOKO PRIZEMLJE STAN **br.3**

BROJ	NAZIV PROSTORIJE	P (m ²)
1	HODNIK	9.05
2	DNEVNA SOBA + KUHNJA+TRPEZARIJA	20.93
3	KUPATILO	5.80
4	SOBA	13.61
5	TERASA	4.15
		53.5400

UKUPNA POVRŠINA STANA

53.54 m²

POZICIJA STANA U ZGRADI



LAMELA II