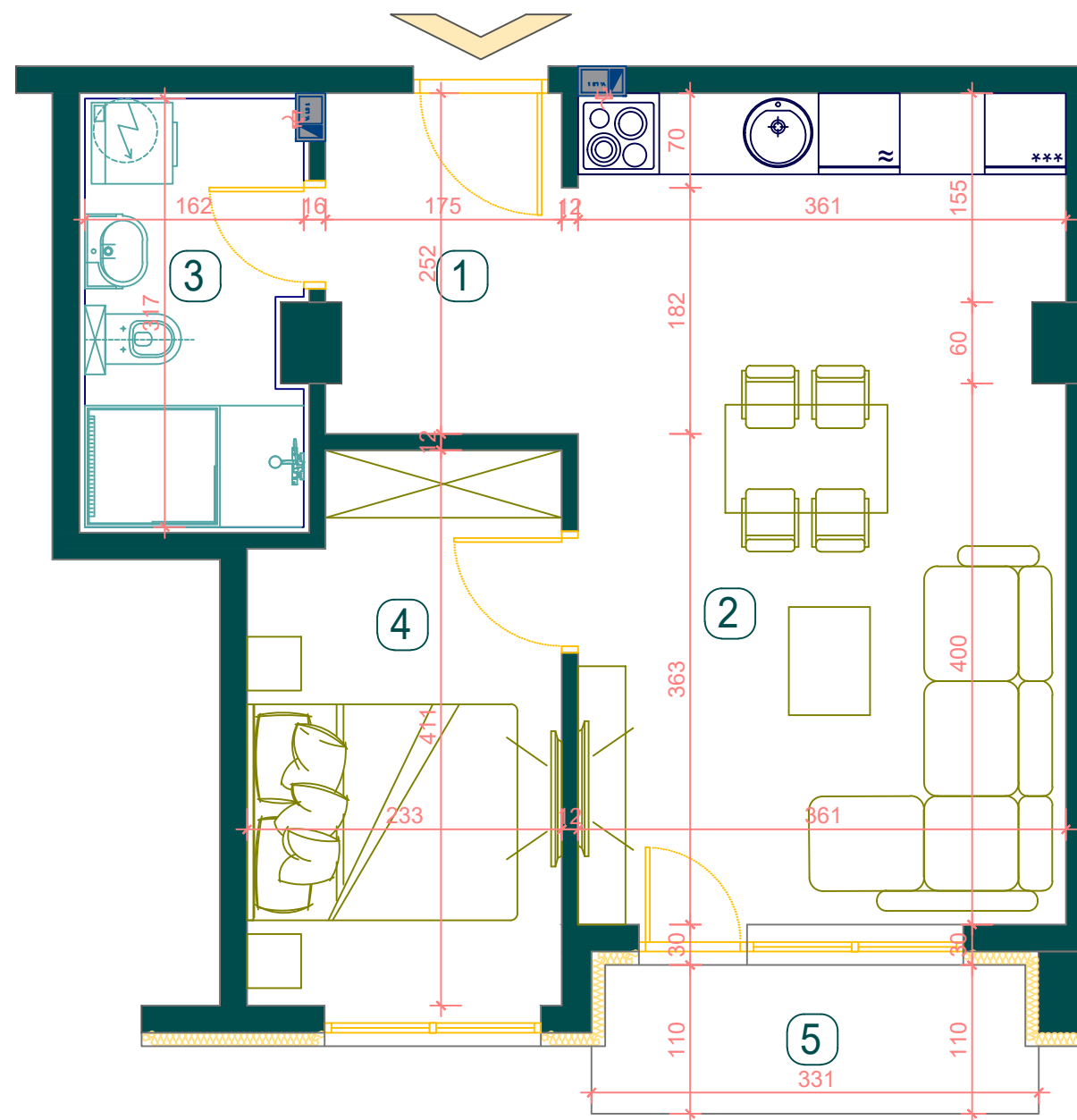


**BMT LUX**  
INVEST



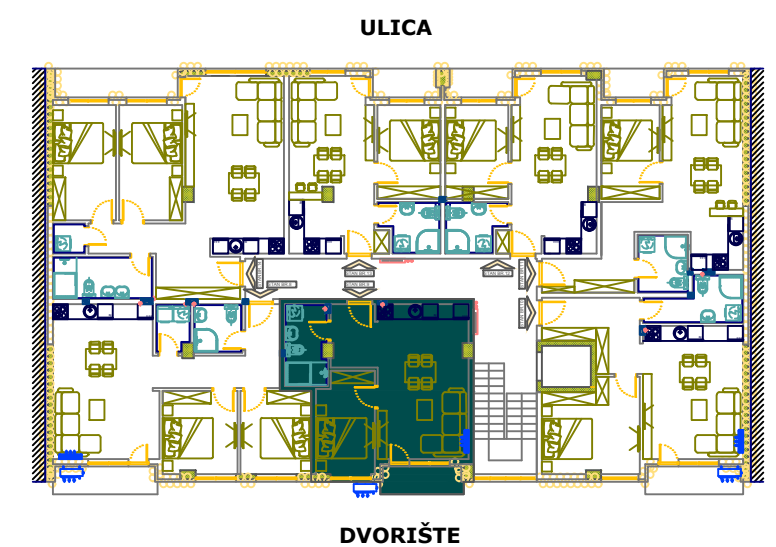
## VISOKO PRIZEMLJE STAN **br.2**

BROJ	NAZIV PROSTORIJE	P (m <sup>2</sup> )
1	HODNIK	4.56
2	DNEVNA SOBA + KUHNJA+TRPEZARIJA	22.05
3	KUPATILO	5.36
4	SOBA	9.15
5	TERASA	3.52
		44.6400

UKUPNA POVRŠINA STANA

**44.64 m<sup>2</sup>**

### POZICIJA STANA U ZGRADI



**LAMELA II**