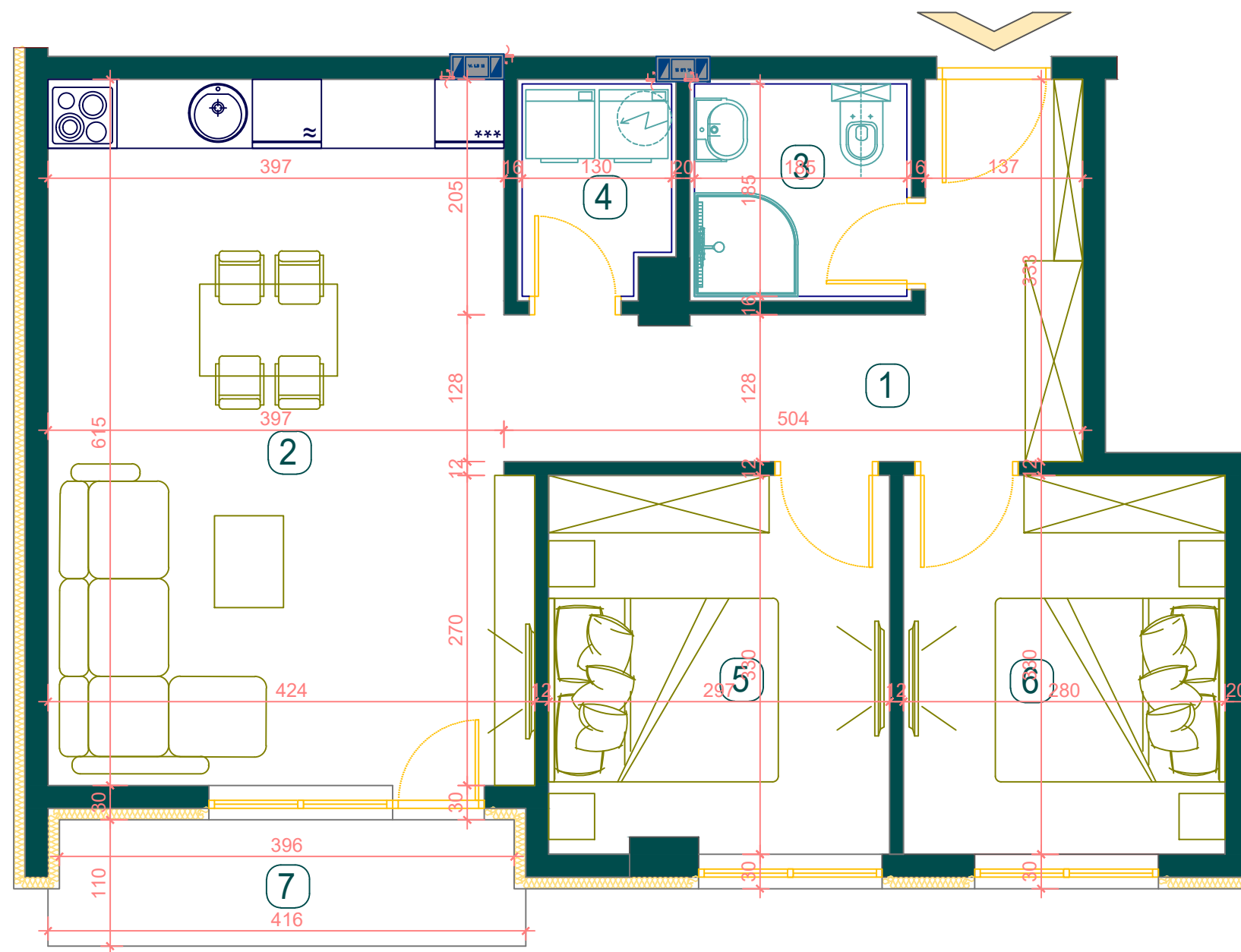


**BMT LUX**  
INVEST



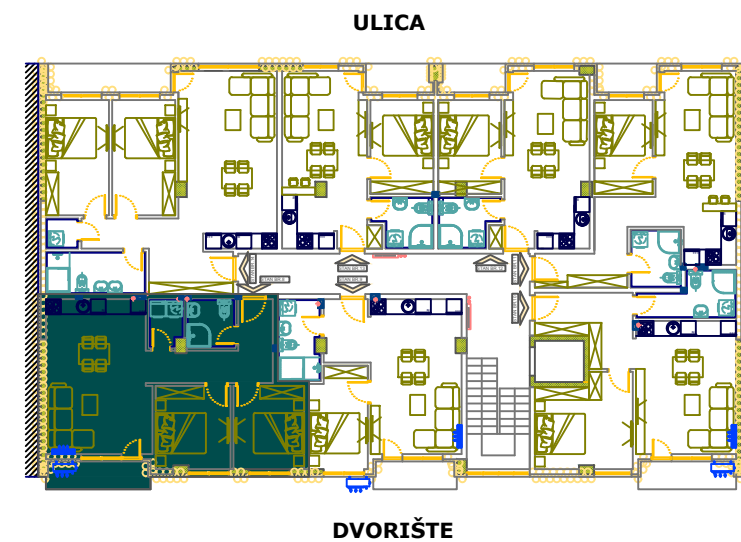
## VISOKO PRIZEMLJE STAN **br.1**

BROJ	NAZIV PROSTORIJE	P (m <sup>2</sup> )
1	HODNIK	9.22
2	DNEVNA SOBA + KUHINJA+TRPEZARIJA	25.15
3	KUPATILO	3.73
4	OSTAVA	2.54
5	SOBA 1	9.71
6	SOBA 2	9.24
7	TERASA	4.46
		64.0500

UKUPNA POVRŠINA STANA

**64.05 m<sup>2</sup>**

### POZICIJA STANA U ZGRADI



**LAMELA II**